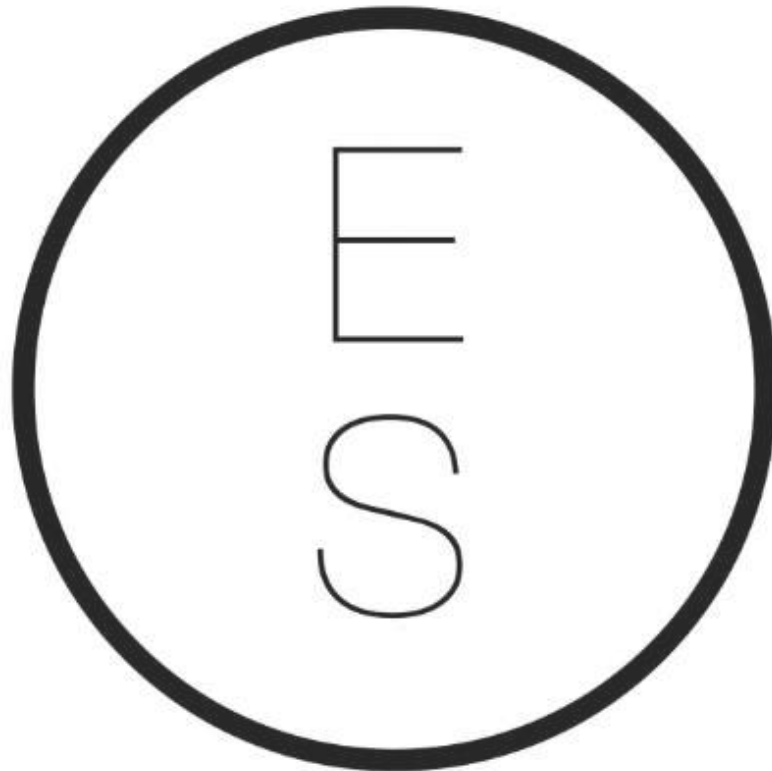


# SUMMER EXHIBITION 2020



[www.edouardsimoens.com](http://www.edouardsimoens.com)

[info@edouardsimoens.com](mailto:info@edouardsimoens.com)

+ 472 54 70 15

Zeedijk 811, Knokke 8300

Belgium

BRAM BOGART

GUNTHER FORG

PETER HALLEY

ALEX KATZ

YVES KLEIN

YAYOI KUSAMA

SEAN SCULLY

TOM WESSELMANN

[www.edouardsimoens.com](http://www.edouardsimoens.com)

[info@edouardsimoens.com](mailto:info@edouardsimoens.com)

+ 472 54 70 15

Zeedijk 811, Knokke 8300

Belgium

**BRAM BOGART**

Blauwswart

1988

Mixed media

45.5 × 56.6 × 4.5 cm



[www.edouardsimoens.com](http://www.edouardsimoens.com)

[info@edouardsimoens.com](mailto:info@edouardsimoens.com)

+ 472 54 70 15

Zeedijk 811, Knokke 8300

Belgium

## GÜNTHER FÖRG

Untitled

1995

Acrylic on lead laid on wood

180 x 110 cm



[www.edouardsimoens.com](http://www.edouardsimoens.com)

[info@edouardsimoens.com](mailto:info@edouardsimoens.com)

+ 472 54 70 15

Zeedijk 811, Knokke 8300

Belgium

## GÜNTHER FÖRG

Untitled

1992

Acrylic on paper (in 10 parts )

49.5 x 37.7 cm



[www.edouardsimoens.com](http://www.edouardsimoens.com)

[info@edouardsimoens.com](mailto:info@edouardsimoens.com)

+ 472 54 70 15

Zeedijk 811, Knokke 8300

Belgium

**PETER HALLEY**

Untitled (11/16/95.12)  
1999

Acrylic , day-glo acrylic and metallic acrylic on computer printed paper  
45,72 x 60,96 cm



[www.edouardsimoens.com](http://www.edouardsimoens.com)  
[info@edouardsimoens.com](mailto:info@edouardsimoens.com)  
+ 472 54 70 15  
Zeedijk 811, Knokke 8300  
Belgium

**ALEX KATZ**

Peony incarnation #11

2000

Oil on board

23 x 30 cm



[www.edouardsimoens.com](http://www.edouardsimoens.com)

[info@edouardsimoens.com](mailto:info@edouardsimoens.com)

+ 472 54 70 15

Zeedijk 811, Knokke 8300

Belgium

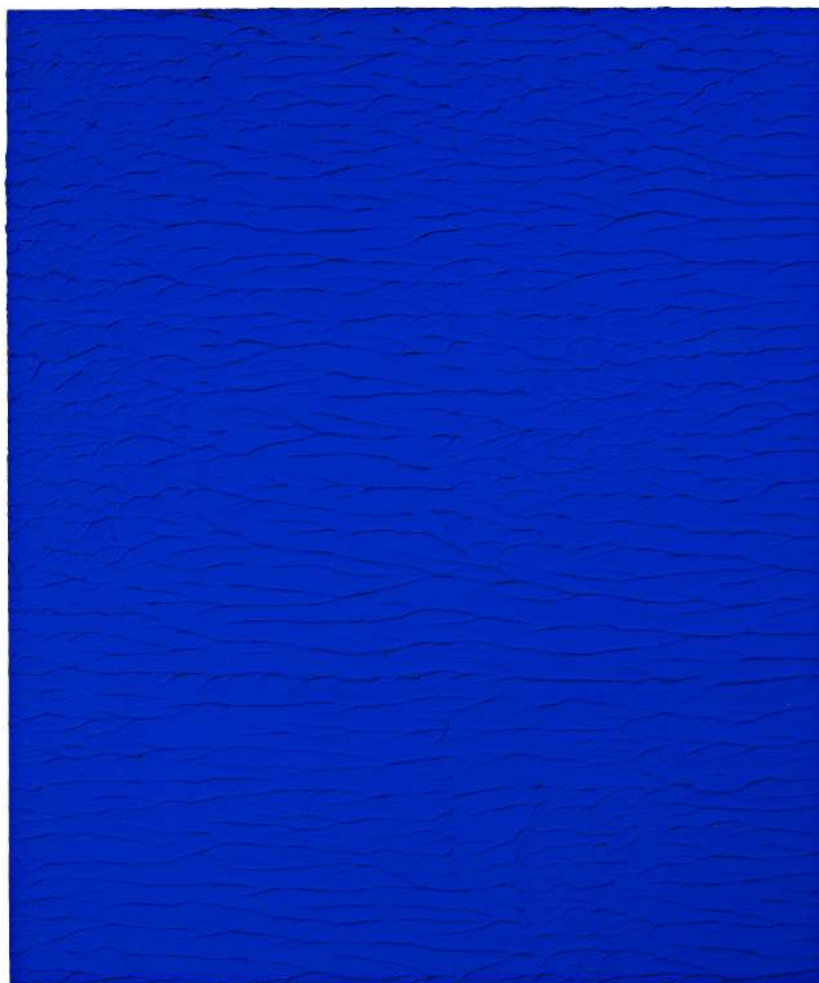
**YVES KLEIN**

Monochrome bleu IKB 321

1959

Dry pigment and synthetic resin on cartolin

21.9 x 18.3 cm



[www.edouardsimoens.com](http://www.edouardsimoens.com)

[info@edouardsimoens.com](mailto:info@edouardsimoens.com)

+ 472 54 70 15

Zeedijk 811, Knokke 8300

Belgium



## YVES KLEIN

Eponge bleue, SE 313

Ca.1961

Pure pigment and synthetic resin on natural sponge, rod and base  
made of brass  
6,3 x 7 x 3,7 cm



[www.edouardsimoens.com](http://www.edouardsimoens.com)

[info@edouardsimoens.com](mailto:info@edouardsimoens.com)

+ 472 54 70 15

Zeedijk 811, Knokke 8300

Belgium

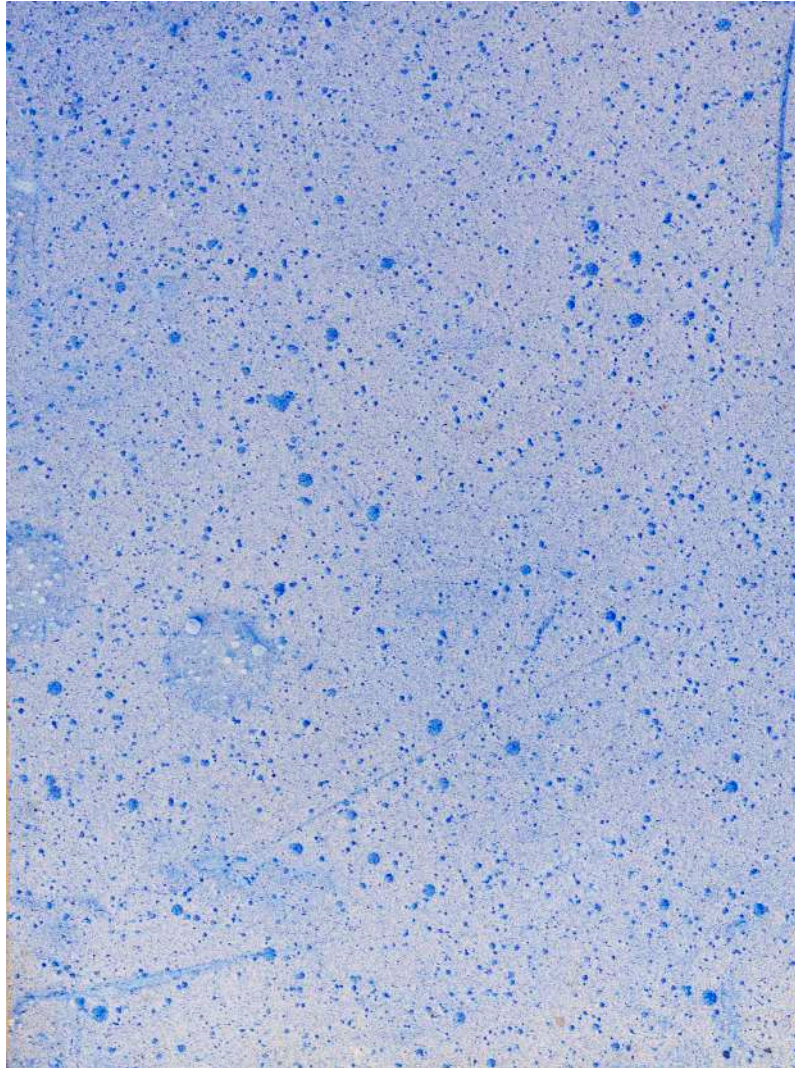
**YVES KLEIN**

*Cosmogonie* (COS 16)

1960

Mixed media, pigment on paper, laid on canvas in plexiglass box

Plexiglass box : 28,5 x 17,7 cm



[www.edouardsimoens.com](http://www.edouardsimoens.com)

[info@edouardsimoens.com](mailto:info@edouardsimoens.com)

+ 472 54 70 15

Zeedijk 811, Knokke 8300

Belgium

**YAYOI KUSAMA**

*Infinity dots (O.H.K)*  
1998

Mixed media, resin and wood  
42,7 x 42,7 x 21,5 cm



[www.edouardsimoens.com](http://www.edouardsimoens.com)

[info@edouardsimoens.com](mailto:info@edouardsimoens.com)

+ 472 54 70 15

Zeedijk 811, Knokke 8300

Belgium

## SEAN SCULLY

2.1.93

1993

Watercolor on paper

38.3 x 45.4 cm



[www.edouardsimoens.com](http://www.edouardsimoens.com)

[info@edouardsimoens.com](mailto:info@edouardsimoens.com)

+ 472 54 70 15

Zeedijk 811, Knokke 8300

Belgium

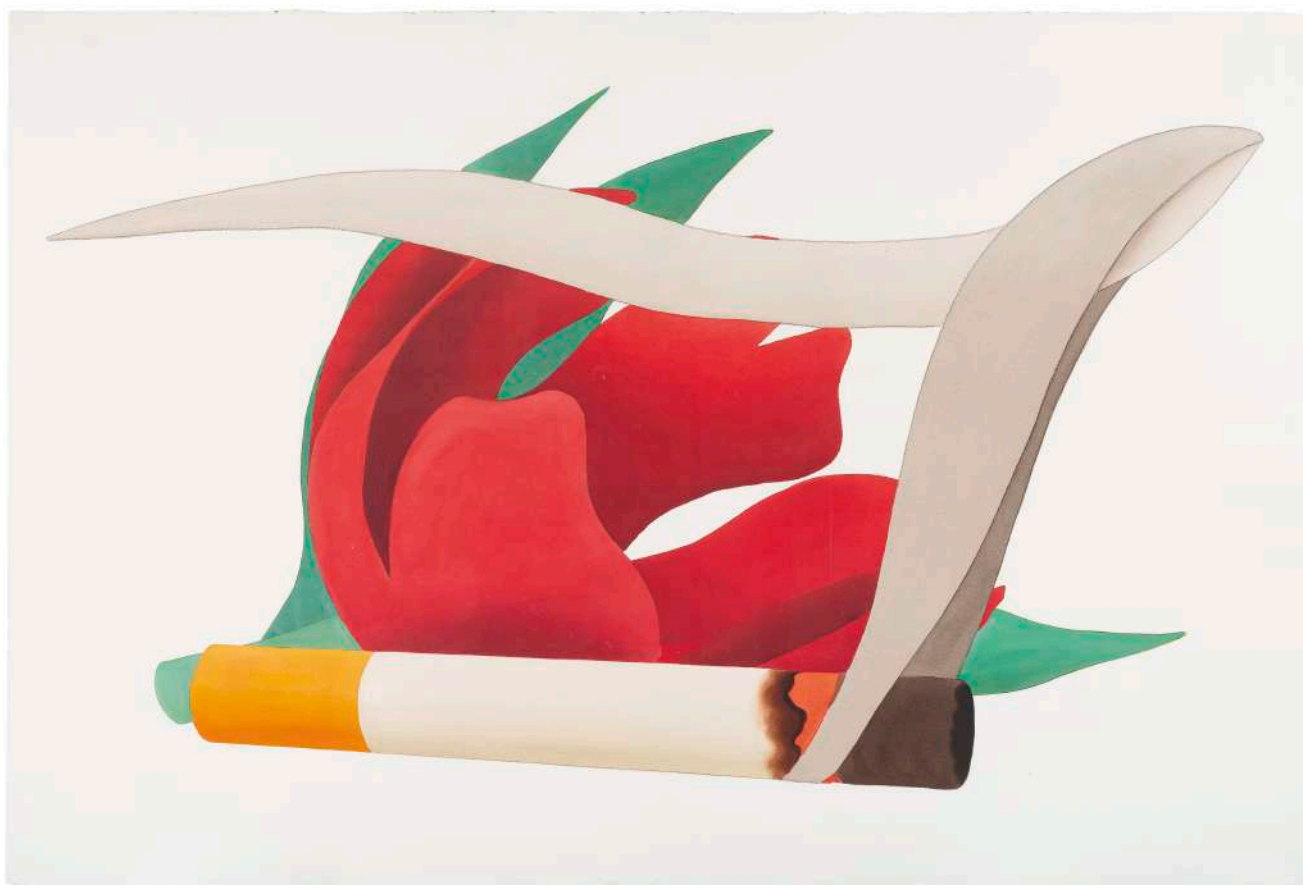
**TOM WESSELMANN**

*Big Study for Tulip & Smoking Cigarette (Close-Up)*

1981

Liquitex and graphite on rag board

102,2 x 152,4 cm



[www.edouardsimoens.com](http://www.edouardsimoens.com)

[info@edouardsimoens.com](mailto:info@edouardsimoens.com)

+ 472 54 70 15

Zeedijk 811, Knokke 8300

Belgium